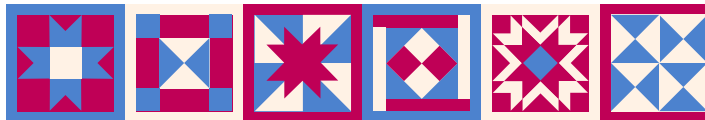


Quilt Show This Month!

Healthcare Forum

OFFICERS

President's Council	Michele Ing 842-6943 Lyn Hackett 842-4946 Margie Enger 842-9996
Program Chairs	Esther Forman 847-2856 Lani Yoshimura 379-7964
Membership Chairs	Marianne Peoples 842-9022 Arti O'Connor 847-0451
Recording Secretary	Deb Kaczor (650) 255-2324
Treasurer	Cindy Hughes 847-6868
Public Policy Chair	Jan Paterson 842-3737
Publicity Chair	Connie Rogers 842-8494
Newsletter & Website Chair	Susan Murphey Patereau 981-2799
International Studies Chair	Lyn Hackett 842-4946



Marianne Peoples writes:

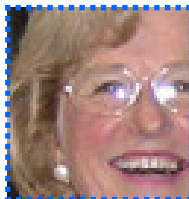


Quilt Show is coming up on the 19th of May!

Marianne Peoples

We need your help in selling tickets and letting us know how many you have sold so we can plan for food. Call or e-mail me right away to let me know. My telephone number is 842-9022, and my e-mail is quiltldy@garlic.com.

Lyn Hackett is putting recipes together. If you are interested in helping here, contact Lyn or Jan Paterson.



Lyn Hackett

Know someone or you might have a quilt or quilts to display, contact Lyn or one of the following people so that forms can get to you so a description of the quilt can be made. People to contact are: Lyn Hackett, Carol Smith, Margie Enger,



Jan Paterson

Deb Kaczor, Marianne Peoples.

We will need help in setting up at 8:30 on the day of the function, taking down starting at 3 PM.



Carol Smith

Serving, sell-

ing tickets, selling raffle tickets, and helping our guests are positions that will need to be covered that day, too.

Further questions, call Lyn or Marianne. Lyn's telephone number is 842-4946, and her e-mail is hackett@garlic.com.



Margie Enger



Deb Kaczor

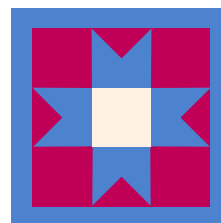
Gilroy AAUW, in conjunction with Gilroy Teachers Association, and California Teachers Association has scheduled a public forum on Wednesday, May 23, 2007 from 7 to 9PM to discuss the issues concerning the four major California Health Care proposals authored by State Senators Kuehl, Nunez, Perata, and the Governor.

The purpose of the forum is to inform members of the South Santa Clara County communities about the health proposals so that they can make informed decisions and encourage their representatives to support the best proposal.

The forum will be held at the Gilroy High School Theater, and is open to the public.

All Gilroy AAUW members are encouraged to attend, and to invite family and friends to come along and get informed about the future of health care in California.

This forum has been organized with the help of AAUW members Connie Rogers, Esther Forman and Lani Yoshimura. Help is needed the evening of the forum, so if you are available please contact Connie at 842-8494, or e-mail her at jrogers@garlic.com.



End-of-Year BBQ

To celebrate our year, the Gilroy AAUW has an End-of-Year BBQ. This year the event is scheduled for Saturday, June 9th, at the home of Lyn Hackett. Lyn's address is 11048 Alessi Court, Gilroy.

Members and guests are welcome and encouraged to attend. Bring your spouse, your friend, a potential AAUW member, or anyone who would enjoy the evening with friends.

The celebration begins at 4 PM.

The following is a list of who brings what (**according to FIRST NAME INITIAL**):

- A-D bread or rolls
- E - K side dish
- L - P salad
- Q - Z dessert

Directions to Lyn's house:

Leavesley Road, east, past Gilroy Premium Outlets, to New Avenue. Left on New Avenue. Go 2.7 miles to Right on Alessi Court.



Pay Equity

Tuesday, April 24 was *Equal Pay Day*, the annual symbolic day on which women's average wages catch up to men's from the previous year.

Read the AAUW Educational Foundation's new report, *Behind the Pay Gap*, and learn more about what you can do to support pay equity at www.aauw.org/payequity.

URGENT CALL TO ACTION

It's time, once again, to examine the future of Gilroy AAUW.

The current Board of Directors has set a General Membership Meeting for Tuesday evening, June 5th, at 7 PM. The meeting will take place at Eileen Barrett's house, 7811 Santa Theresa Drive, Gilroy.

The topic to be discussed is: What is the future of our Chapter?

Recent years have been hard on our chapter. There is dwindling membership, and with that fewer and fewer members to carry out our tasks: to raise money for scholarships and other AAUW-specific funds, and to present programs of interest to our members and the public.

The fund-raising events have been sparsely attended by our members, and it is difficult to get enough members to help with the events. This is a source of frustration for our current board and the few active members we have.

We are now faced with a new year. We need officers to serve on the board, we need to collect dues from women who are interested in our group and our cause, and we need to be honest with ourselves about whether there is energy and dedication to the tasks.

Please come to this general meeting and give the current board your input. It is vital that we hear from you if you want the Gilroy AAUW Chapter to survive.

cinch club.com

EVEN GETTING STARTED IS A CINCH

Shaklee
Creating Healthier Lives™

Suzanne Barrett
(408) 683-2400
www.shaklee.net/suzannebarrett

Interest Groups

Culinary Group

The Culinary Group met on March 24 at the home of Marianne Peoples. The evening faire consisted of:

Soups

Bread
Pudding

Quite an interesting combination was enjoyed by a delightful group of 13! The main course



consisted of a delicious chili created by Carolyn Schell, outstanding chioppino master-minded by Deb Kaczor, and lunch box vegetable soup that is delicious especially on a cold day, by Carol Smith.



Blueberry soup was out of this world, ask Charleen Arnberg. We had salad and corn bread as well as rolls.

But the dessert had to have been the best in three kinds of

bread pudding. Jan devised a chocolate, chocolate one complete with whipped cream and sprinkles. Lyn found a pumpkin



bread pudding with cranberries with a wonderful whiskey sauce. Southern bread pudding with caramel sauce was created by Suzanne.

We did have a delightful evening and it is a fun group to be a part of. Interested? Contact Jan Paterson.

Wine & Whine

Whine and Wine for June will be at Deb Kaczor's house. It's the night before the Garage Sale, so we'll be wining, whining AND pricing and sorting for the big event. Please join us. The wine is on the house this month!

Books Group

Here's the latest schedule:

Date	Home
May 31	Suzanne Barrett
June 12	Penny Lockhart
June 28	Jeanmarie Derry
July 10	TBA
July 26	Benita Reimal



It's Dues Time Again!

Dues are due and payable during the month of May. Dues for the year are \$79. Make checks payable to Gilroy AAUW, and send PO Box 1962, Gilroy, California 95021-1962.

Spring Membership Luncheon

Membership Luncheon was held on April 21, Saturday at Westside Grill. The luncheon choices were different and quite attractive as well as delicious. We were small but intimate and had a great time renewing friendships and just getting to know each other better. Jean Burns Slater who lives in Hollister spoke about her trip and experiences in Thailand, Angkor/ Cambodia. She shared pictures, sights and feelings in the areas that she traveled. We certainly would like to have her speak again and share more of her experiences. Presently she is getting ready to more from Hollister. We wish her the best.

The Rules

Equal Times will be published approximately monthly in 2006-2007. The sole purpose of this publication is to convey the association's business to its membership. Only articles and announcements related to branch business will be considered for inclusion.

Submissions, articles and notices are due by the 15th of each month and should be e-mailed, posted or hand delivered to Susan Murphey Patereau, 7470 Crawford Dr., Gilroy 95020, 981-2799, spatereau@charter.net.

Equal Times encourages members to advertise by purchasing a business card size ad, available by contacting Communications Director, Susan Murphey Patereau.

Pay Gap Exists as Early as One Year out of College, New Research Says

Women earn less even when working in the same career field, likely due to sex discrimination

Washington – New research released today by the American Association of University Women Educational Foundation shows that just one year out of college, women working full time already earn less than their male colleagues, even when they work in the same field. Ten years after graduation, the pay gap widens.

In the report, *Behind the Pay Gap*, the AAUW Educational Foundation found that just one year after college graduation, women earn only 80 percent of what their male counterparts earn. Ten years after graduation, women fall further behind, earning only 69 percent of what men earn. Even after controlling for hours, occupation, parenthood, and other factors known to affect earnings, the research indicates that one-quarter of the pay gap remains unexplained and is likely due to sex discrimination. Over time, the unexplained portion of the pay gap grows.

The research also shows that ten years after graduation, college-educated men working full time have more authority in the workplace than do their female counterparts. Men are more likely to be involved in hiring and firing, supervising others, and setting pay.

“By looking at earnings just one year out of college, you have as level a playing field as possible,” said AAUW Director of Research Catherine Hill. “These employees don’t have a lot of experience and, for the most part, don’t have caregiving obligations, so you’d expect there to be very little difference in the wages of men and women. But surprisingly, and unfortunately, we find that women already earn less — even when they have the same major and occupation as their male counterparts.”

The AAUW research also shows that this pay gap exists despite the fact that women outperform men in school — earning slightly higher GPAs than men in every college major, including science and mathematics.

“The persistence of the pay gap among young, college-educated, full-time workers suggests that educational achievement alone will not close the pay gap,” Hill said. “We need to make workplaces more family-friendly, reduce sex segregation in education and in the workplace, and combat discrimination that continues to hold women back in the workplace.”

“AAUW has worked successfully to create educational opportunities for women and girls,” said Lisa Maatz, AAUW director of public policy and government relations. “It’s clear that barriers beyond schooling have prevented true pay equity, and AAUW continues to be a strong advocate for legislative efforts to address this discrimination.”

The report also includes other findings:

- Women who attended highly selective colleges earn less than men from either highly or moderately selective colleges and about the same as men from minimally selective colleges.
- Ten years after graduation, women are more likely than men to complete some graduate education.



“AAUW is dedicated to improving gender equity in the workplace as well as in education. The findings from *Behind the Pay Gap* are telling and disturbing. They show that equity remains an issue for women today.” — AAUW Educational Foundation President Barbara O’Connor

- Men and women remain segregated by college major, with women making up 79 percent of education majors and men making up 82 percent of engineering majors. This segregation is found in the workplace as well, where women make up 74 percent of the education field and men make up 84 percent of the engineering and architecture fields.



Susan Murphey Patereau
Team Patereau
(408) 981-2799
www.TeamPatereau.com

Stocks • Bonds • CDs • Mutual Funds • IRAs



7877 Wren Ave., Suite A
Gilroy CA 95020
(408) 842-6943
www.edwardjones.com
Member SIPC



Michele Ing
Investment Representative